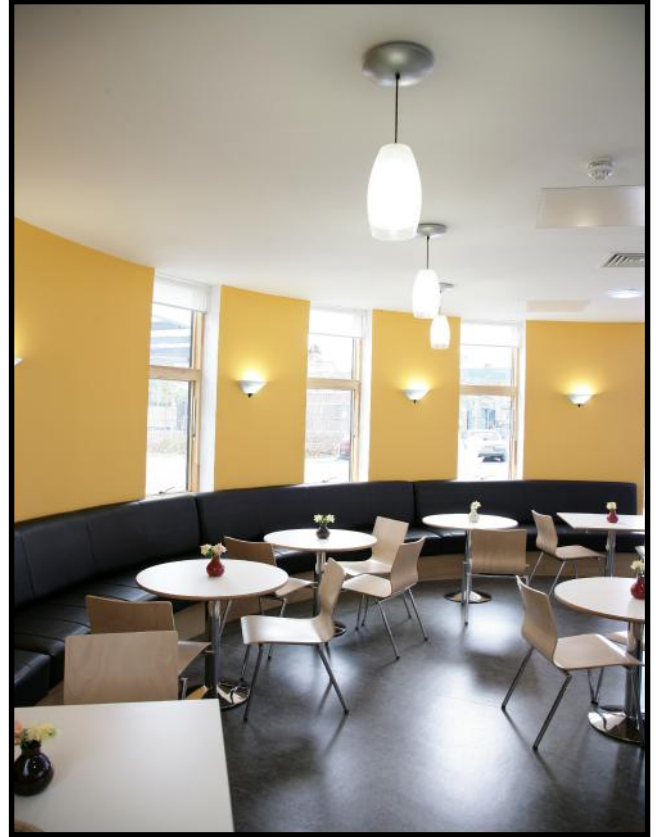




# Healthcare Project Profile—Bayview Centre



**LOCATION:** Ballyholme Road, Bangor  
**CLIENT:** SEHSCT  
**MAIN CONTRACTOR:** H&J Martin

### PROJECT DESCRIPTION

The Bayview Adult Unit in Bangor was commissioned by South Eastern Health & Social Care Trust at a cost of £4.6m. The project was highly commended in 2009 RICS Awards.

This project entailed a purpose built unit constructed with the objective of providing services for the elderly with learning disabilities and or dementia, so that they can live more independent lives.

People come to the Unit on a regular basis to promote health and well-being by participating in various activities and also in the wider community.

The resource centre offers up to 50 places per day.

### SERVICES

- Electrical distribution system
- Lighting
- General power supply
- Fire alarms
- Intruder alarms
- Facilities for the disabled
- Access control
- TV aerials
- Testing and inspection
- Audio/visual system

Windsor Business Park, 16-18 Lower Windsor Avenue, Belfast, BT9 7DW

T: (028) 9068 1176 E: info@jdmcg.co.uk W: www.jdmcg.co.uk

